

The background features a dark blue gradient with a subtle pattern of white dots. Overlaid on this are several white circular and semi-circular lines of varying thicknesses, some with arrows indicating direction. A prominent feature is a large circular scale on the left side, with numerical markings from 40 to 260 in increments of 10. The scale is partially obscured by other circular elements.

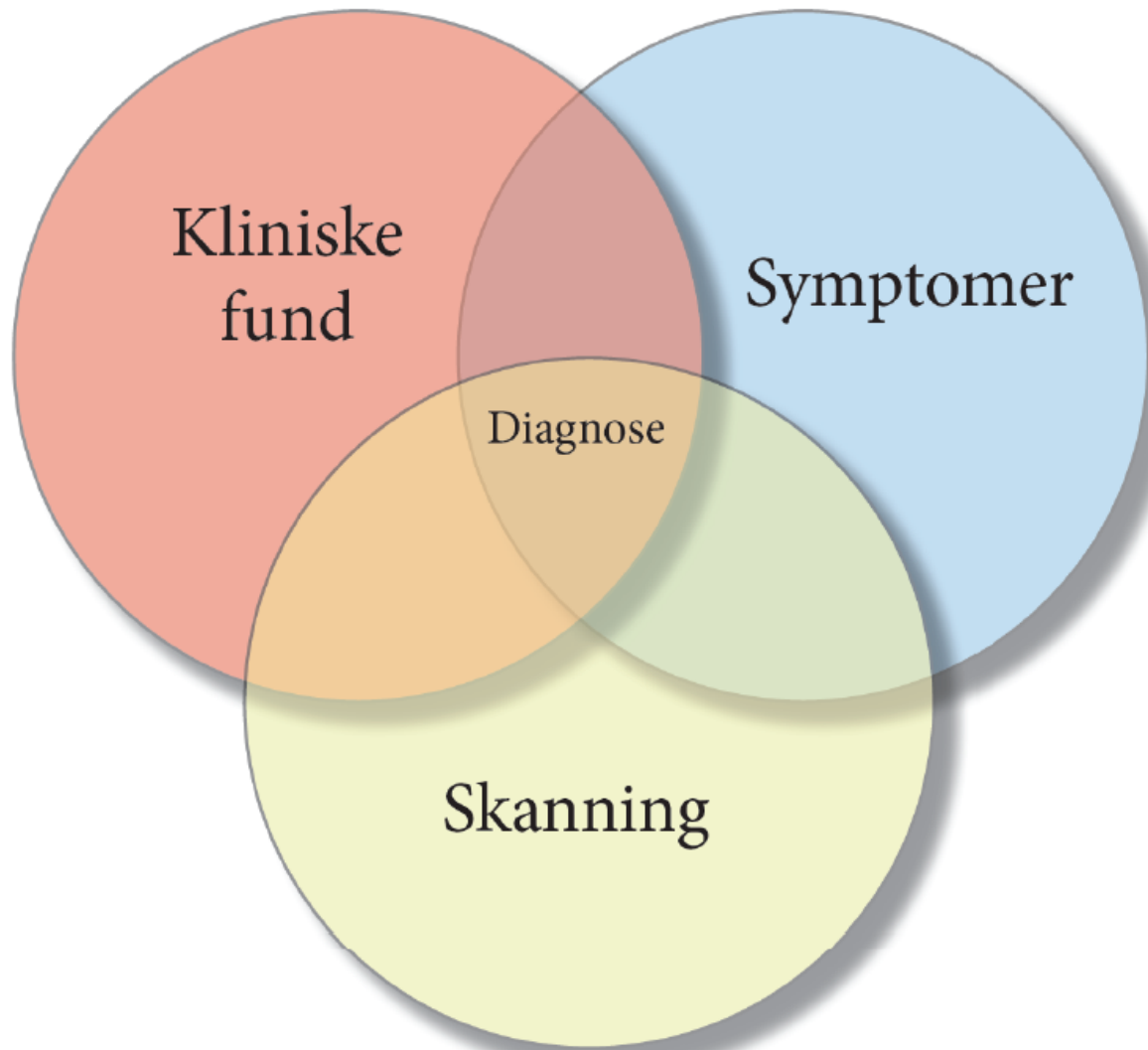
CERVIKALT RODTRYK

JØRGEN DEGN, VRRGK

9:30-10:00

DEN KLINISKE DIAGNOSE

- Hvad fejler patienten?
- Hvad er smertegeneratoren?
- Hvor sidder læsionen i nervesystemet? Rod? Perifer nerve?
- Sygehistorien
- Den objektive (neurologiske) undersøgelse
- Signifikant radiologisk rodpåvirkning?



Kliniske
fund

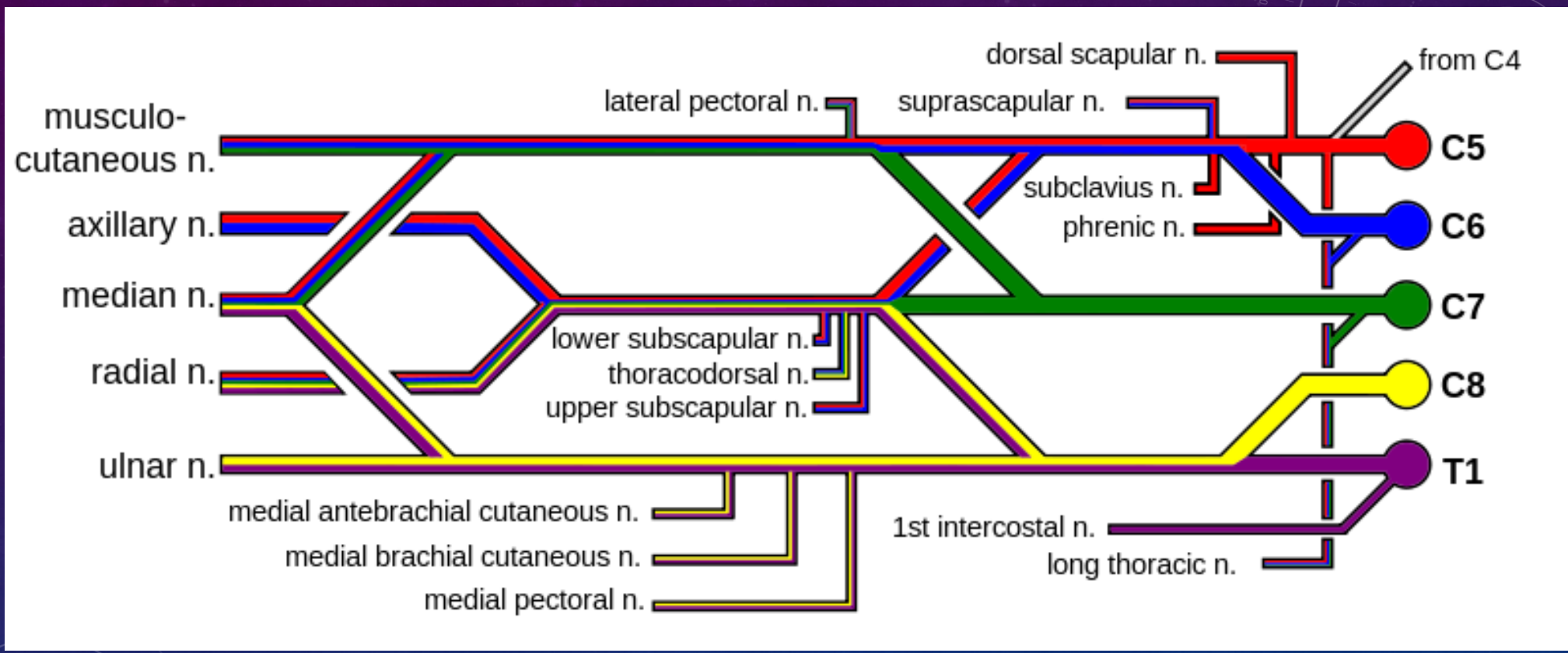
Symptomer

Diagnose

Skanning

SPONDYLOSE

- Overvejende ikke-symptomgivende aldringsfænomen > 40 år
- Axiale nakkesmerter inkl. ømhed af paraspinale muskler
- Armsmerter (cervikal radikulopati)
- Cervikal spondylotisk myelopati



DIFFERENTIALDIAGNOSER

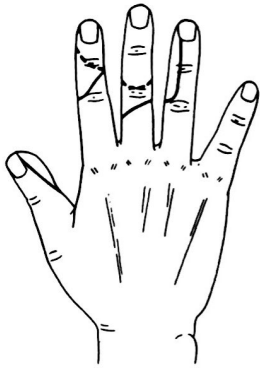
- Plexuspåvirkning
- Neuropati
- Motorneuron sykdom
- Skulderlidelse
- Perifer nerverlidelse
- Polymyalgi, myopati
- IHS
- Reflexdystrofi
- Herpes zoster
- Thoracic outletsyndrome
- Epidural absces
- Tumor, syrinx

KARPALTUNNEL SYNDROMET

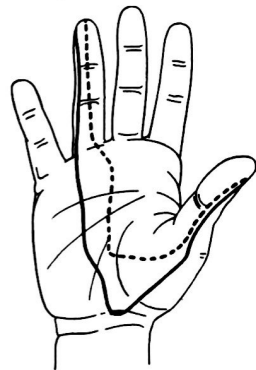
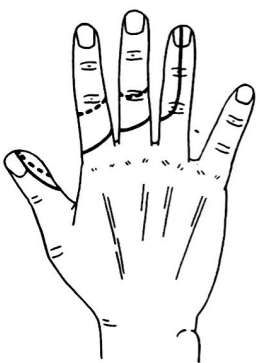
- N. Medianus, kvinder, 40-60 år, 1/3 bilateralt
- Smerter, paræstesier 2.+3. finger, evt underarm/skulder
- Værst om natten, vækker pt som må ryste hånden
- Evt. muskelsvind af thenar
- Evt. lammelse af tommelfingerens abduktion/opposition
- Tinel's bankeprøve, Phalens fleksionstest



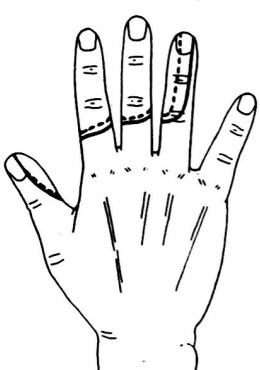
A



B



C



ULNARISKOMPRESSION

- Tryk i albue regionen
- Ulnare føleforstyrrelser 4.+5. finger, smerter
- Provokeres ved bevægelse af albueleddet
- Parese: hammer, syning, maskinskrivning – fingerspredning, lillefingerens abduktion, tommelfingerens adduktion
- Atrofi: mm. Interossei, hypothenar

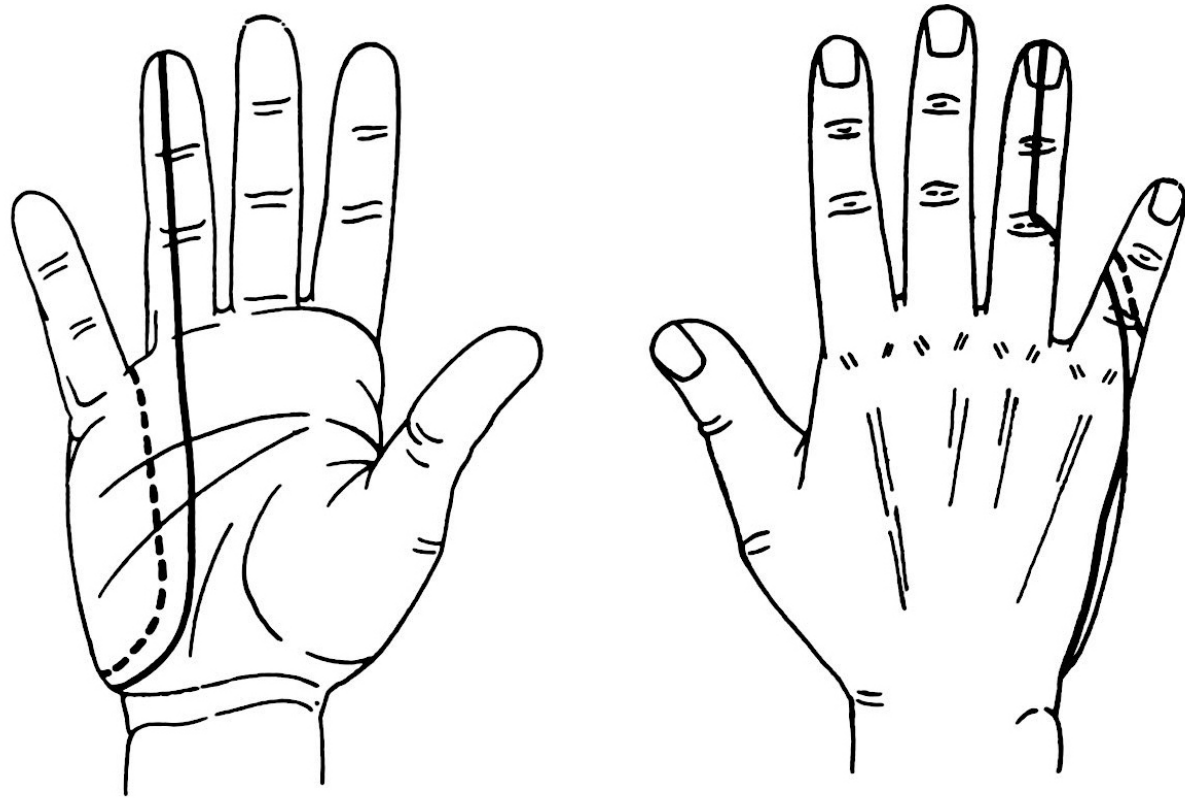
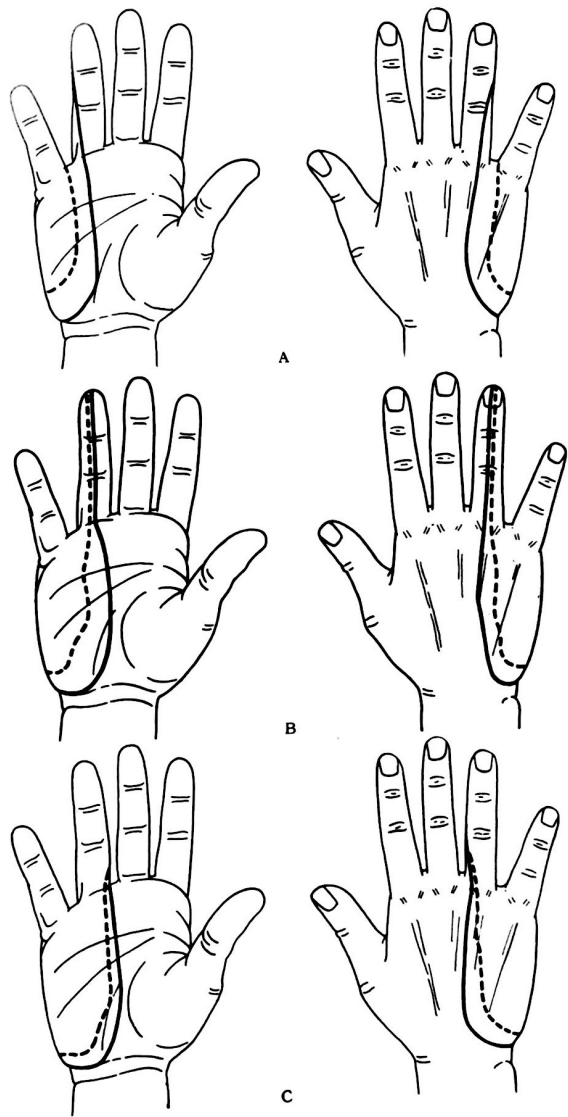
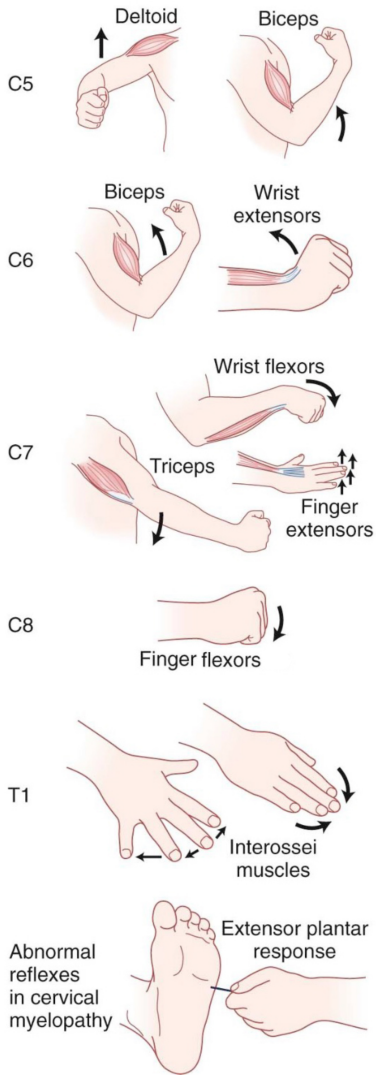


Fig. 77 The approximate area within which sensory changes may be found in lesions of the ulnar nerve below the origin of its dorsal branch. Light touch, continuous line; pin-prick, dotted line. (Modified from Head and Sherren)

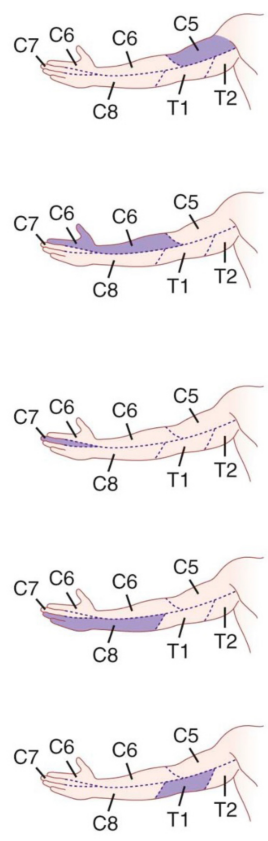
RADIKULOPATI

- Nakke/skulder smerter
- Smerteforværring ved hoste, nys, bugpressen, Spurling
- Skulderabduktionstest giver lindring
- Sjældent parese svt. håndens muskler
- Radikulært føleudfald
- C6 (20%): tommel / C7 (70%): langefinger / C8: lille- og ringfinger
- Ofte atypisk klinik

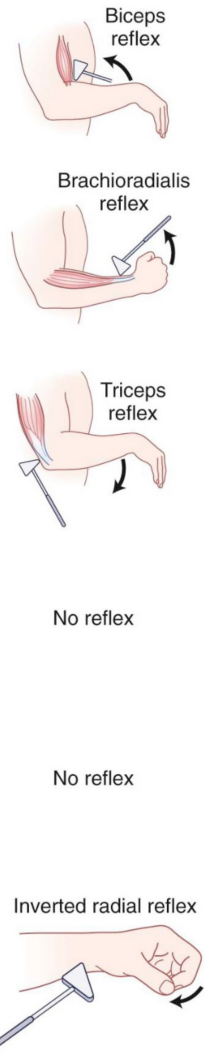
Motor evaluation



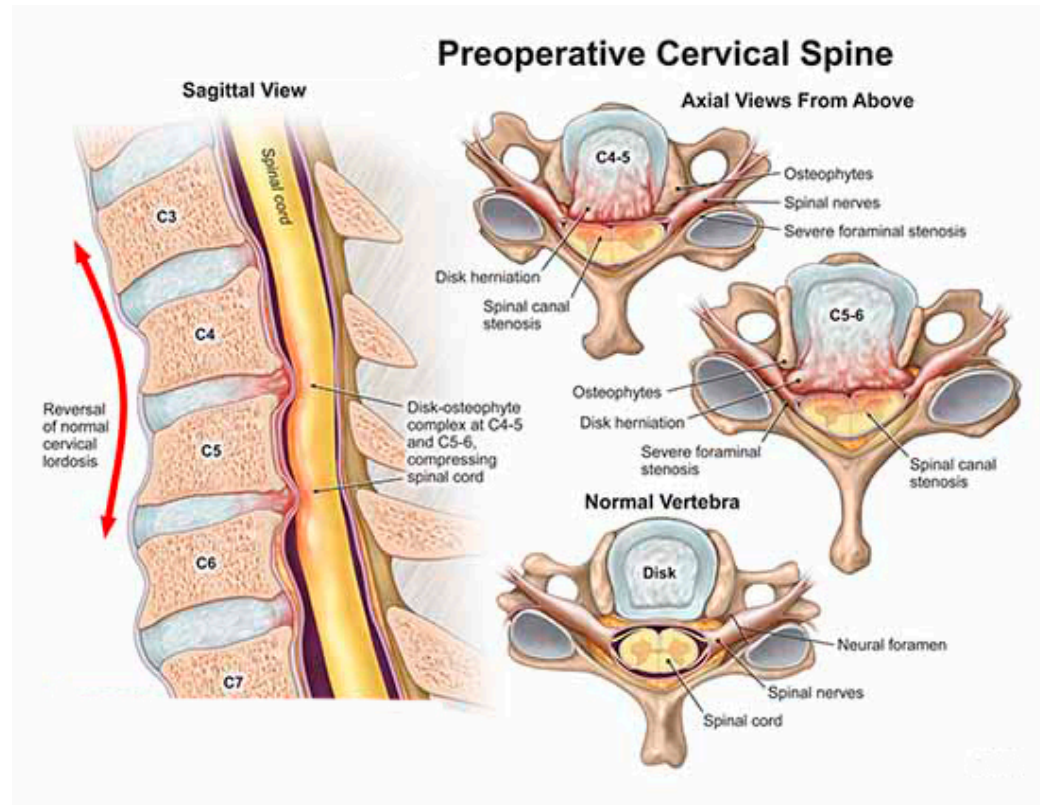
Sensory evaluation



Reflexes

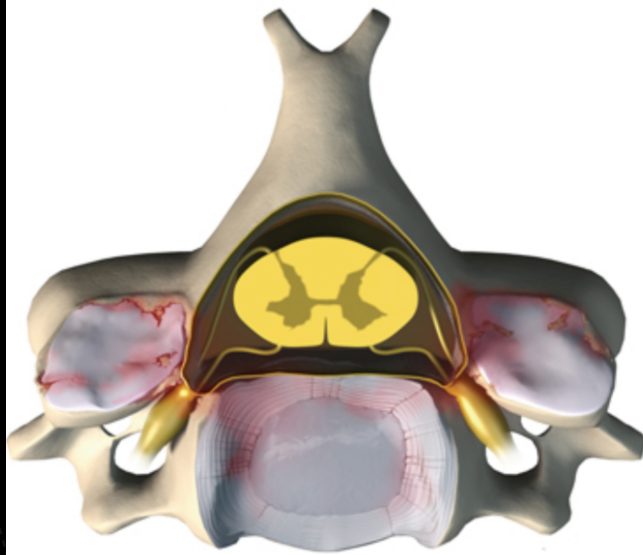


Preoperative Cervical Spine



OPERATION

- Smertefuldt klinisk rodtryk
- Diagnosen verificeret ved skanning
- Manglende effekt af konservativ behandling
- Varighed < 2 år
- Operationsønske
- Lav komorbiditet



1,5 mm

